



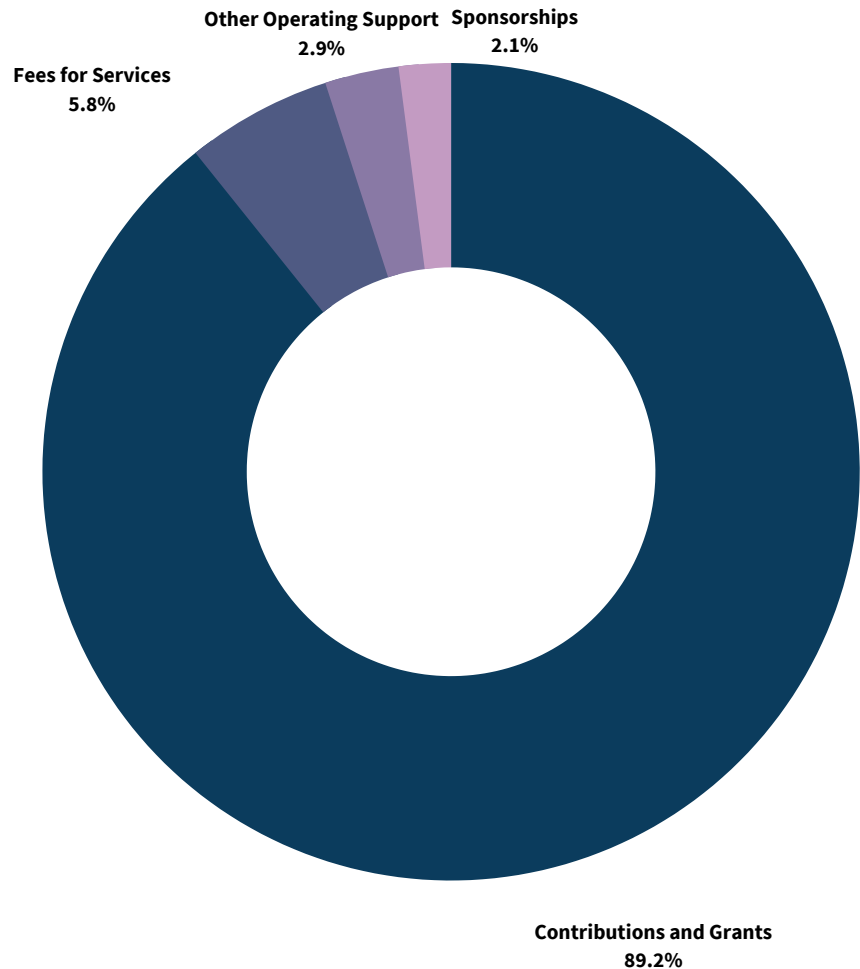
2018 FINANCIALS

2018

OPERATING SUPPORT AND REVENUE

Contributions and Grants	\$2,094,778
Fees for Services	\$135,572
Other Operating Support	\$68,648
Sponsorships	\$48,300

TOTAL **\$2,347,298**

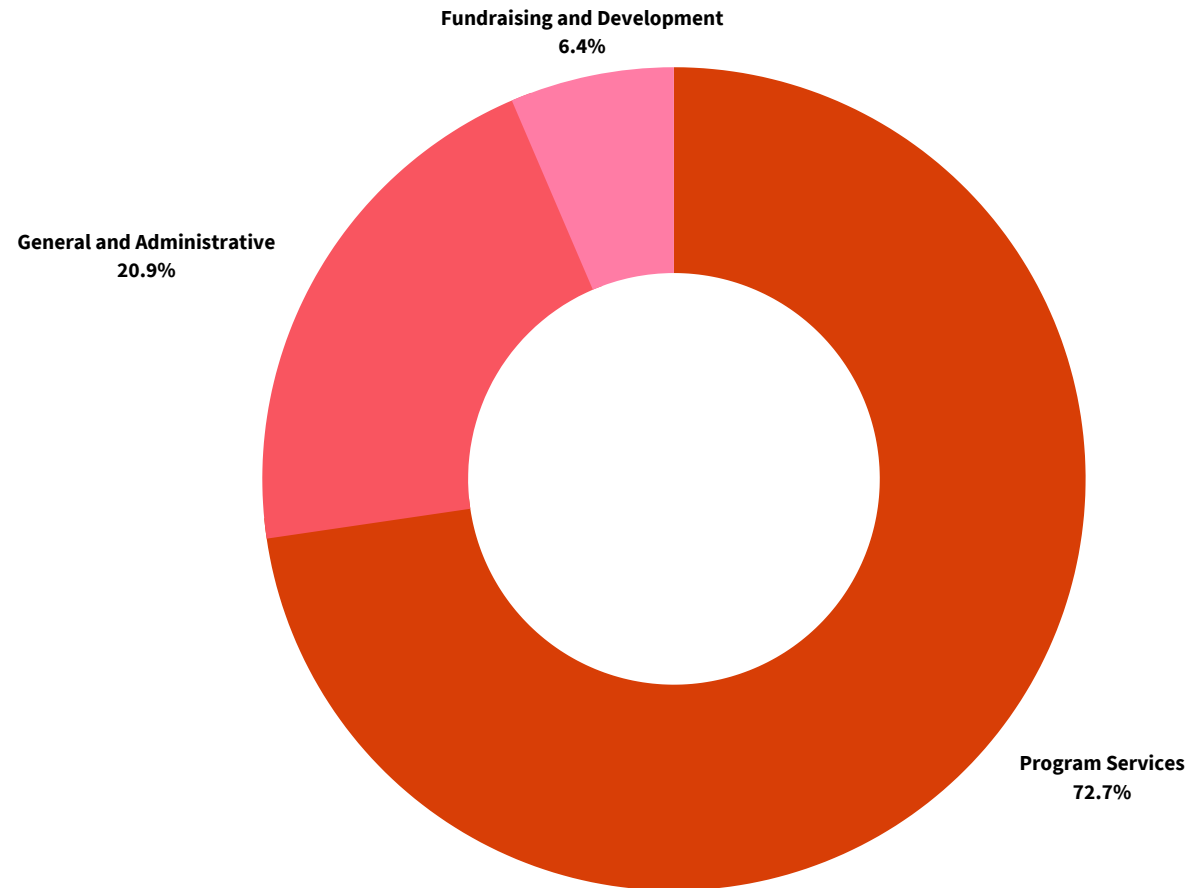


2018

OPERATING EXPENSES

Program Services	\$1,355,118
General and Administrative	\$389,425
Fundraising and Development	\$120,149

TOTAL **\$1,864,692**



“

Brian has worked with healthcare non-profits for more than two decades. As PCP's Chief Executive Officer, he brings his vision and expertise into PCP's work of infusing Relational Leadership™ throughout primary care. Anyone who's gotten to work with Brian becomes immediately struck by his charisma, strategic eye, and incredibly relational approach to work. He's exactly the type of leader we need for this next phase at PCP.

ANDREW MORRIS-SINGER

*on hiring Brian Souza as CEO in
September 2018*



Introducing A New Chapter at Primary Care Progress